

HOW TO USE AN AED IN 7 STEPS

SureFire CPR

If you're at the scene of a cardiac emergency, you need to act quickly. Unfortunately, a SCA victim's chance of survival diminishes with every minute that treatment is delayed. Locating and using an automated external defibrillators (AED) can save their life.

AEDs are incredibly effective and extremely easy to use. In fact, they were specially designed to be user-friendly and simple to operate, even without extensive training. By following just a few steps, you can administer an electric shock in minutes and help restore the patient's regular heartbeat. Plus, you can find them in many public places.

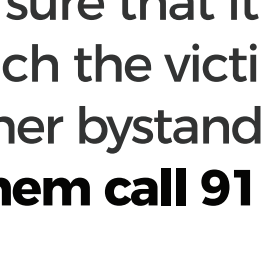
Most AEDs are designed with prompts to walk you through the process. However, if you've never used an AED before, it can still be a bit overwhelming. Understanding how the device works can help you feel ready should you ever need to operate one.

This infographic breaks down each step of using an AED so that you'll know exactly what to do.

The proper steps for operating an AED are as follows:

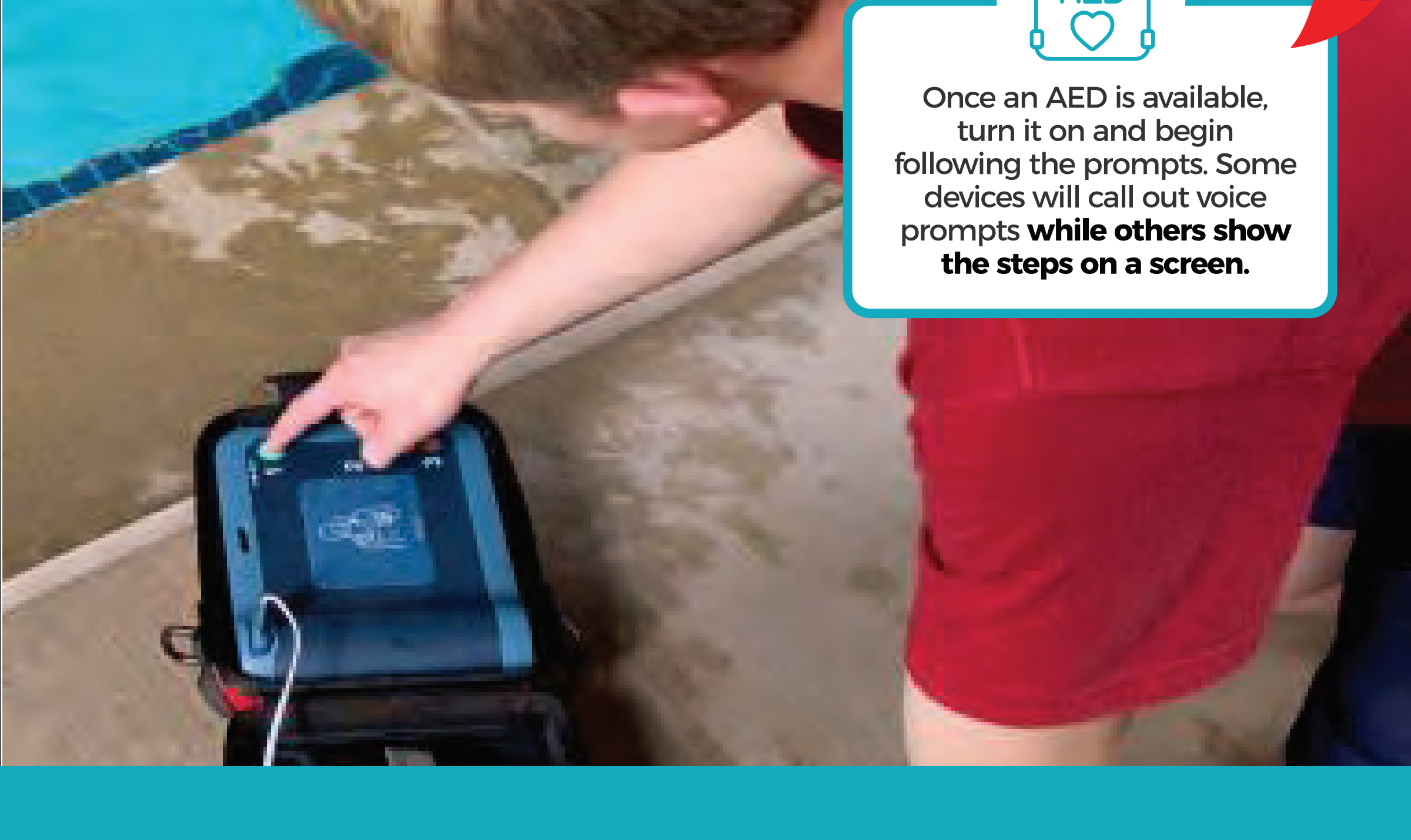


Step 1: Assess the scene



First, check the scene and make sure that it is safe to approach the victim. If there is another bystander around, **have them call 911 for help.**

Step 2: Turn on AED and follow prompts



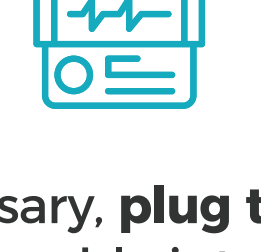
Once an AED is available, turn it on and begin following the prompts. Some devices will call out voice prompts **while others show the steps on a screen.**

Step 3: Attach electrode pads



Remove any clothing that is covering the victim's chest. Attach one electrode pad to the upper right side of the patient's chest, then place the other on the lower left side of the patient's chest.

Step 4: Plug in AED Machine



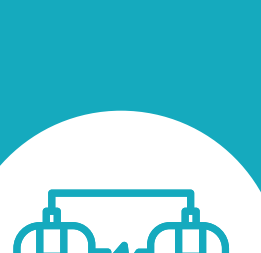
If necessary, **plug the pad** connector cable into the AED.

Step 5: Check for shockable rhythm



Let the AED check for a shockable rhythm. Make sure that no one is touching the patient and call out "clear!".

Step 6: Administer shock if necessary



If the AED determines a shock is necessary, **make sure that no one is touching the patient** and call out "clear!". Once it is safe to do so, administer the shock.

Step 7: Administer chest compression CPR



Begin administering CPR with chest compressions.

Want To Learn More?

Now that you know how to use an AED in 7 steps

(surefirecpr.com/aed/how-to-use-an-aed-in-7-steps/), you can learn more about AED by signing up for BLS training at SureFire CPR. No matter your skill level, getting CPR certified is a great way to sharpen your skills and learn new things. Plus, you never know—**it might just save a life.**

If you have any questions, please contact us. Our team of experts is passionate about CPR and can help you find the right course for you and get your certification. **Give us a call**

at (888) 277-3143 or use our online contact form at

surefirecpr.com/contact-us/